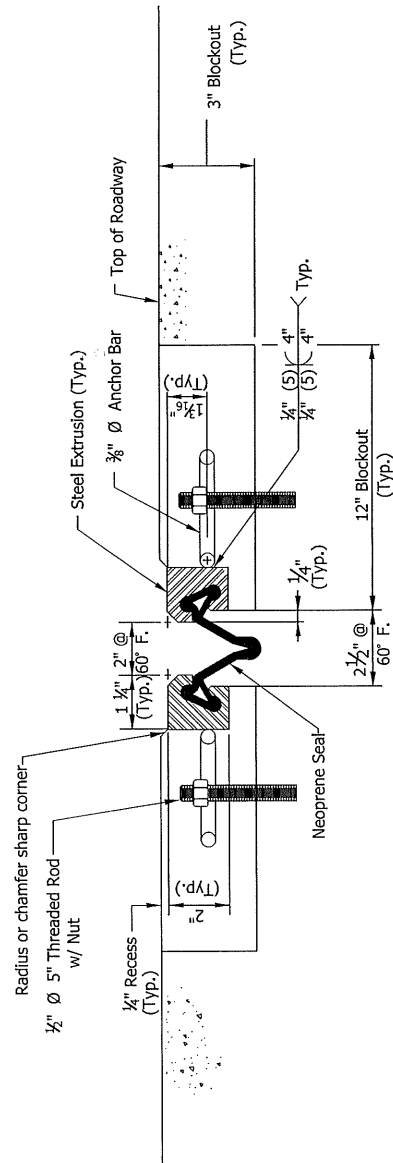


PLAN VIEW

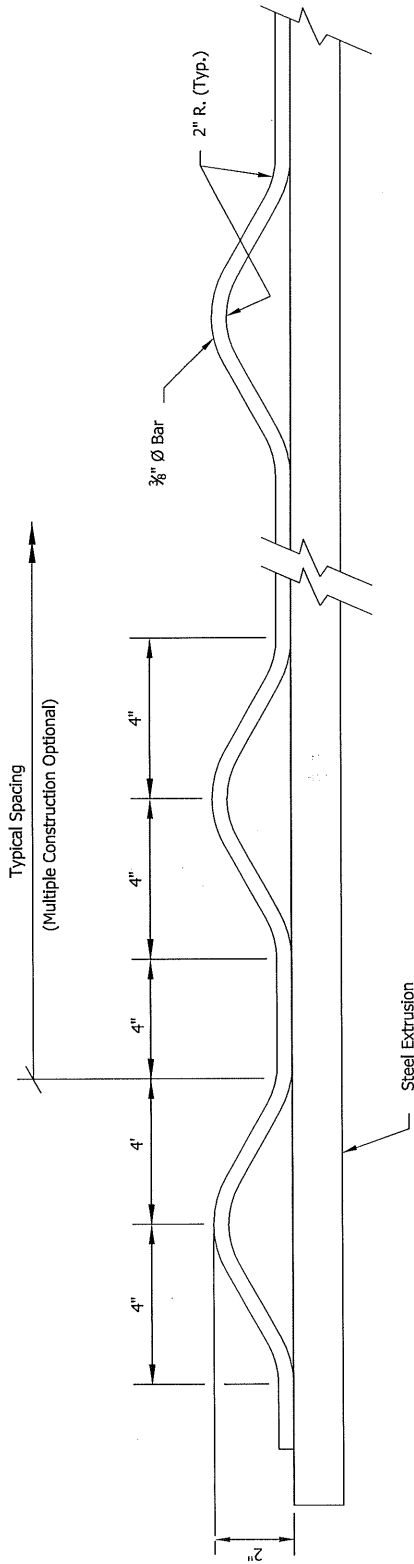
NOTES

1. No weld shall be permitted where steel extrusion comes in contact with the neoprene seal.
2. Threaded rods and nuts shall be placed in accordance with the joint manufacturer's recommendations.

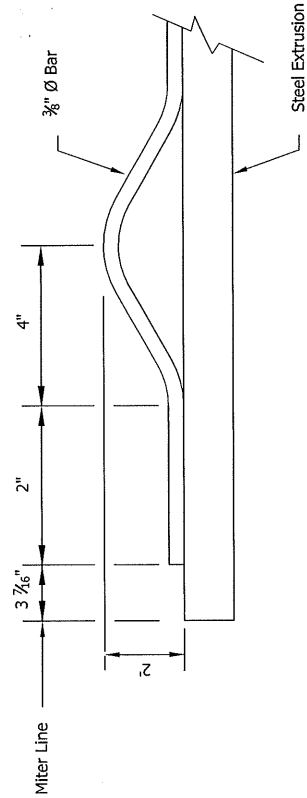


SECTION A-A

INDIANA DEPARTMENT OF TRANSPORTATION
 ALTERNATE SS JOINT



ANCHOR BAR DETAIL



END DETAIL

INDIANA DEPARTMENT OF TRANSPORTATION

ALTERNATE SS JOINT